



Leadership for Health Equity Professional Development Program

Informational Call

June 23, 2025

Welcome!

While we wait for others to log on, please chat in:

- Your name
- Your role
- The organization you represent



IHI Team



**Kelly McCutcheon
Adams, LICSW,**
Senior Director, Faculty



Camille Burnett, PhD, MPA, RN
Vice President, Health Equity



Catherine Warchal
Program Manager



Agenda

- Overview of the Institute for Healthcare Improvement
- Program Overview
- Program Expectations
- Questions



IHI Mission

To improve health
and health care
worldwide

IHI Vision

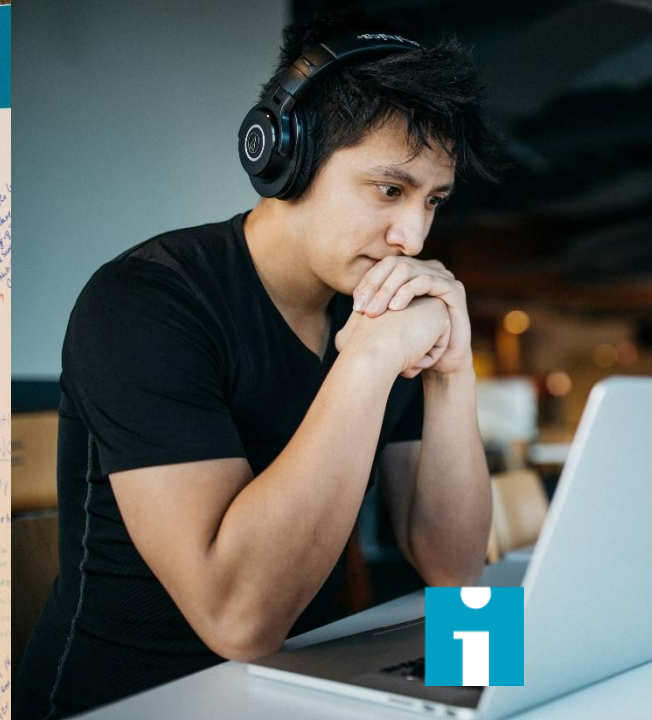
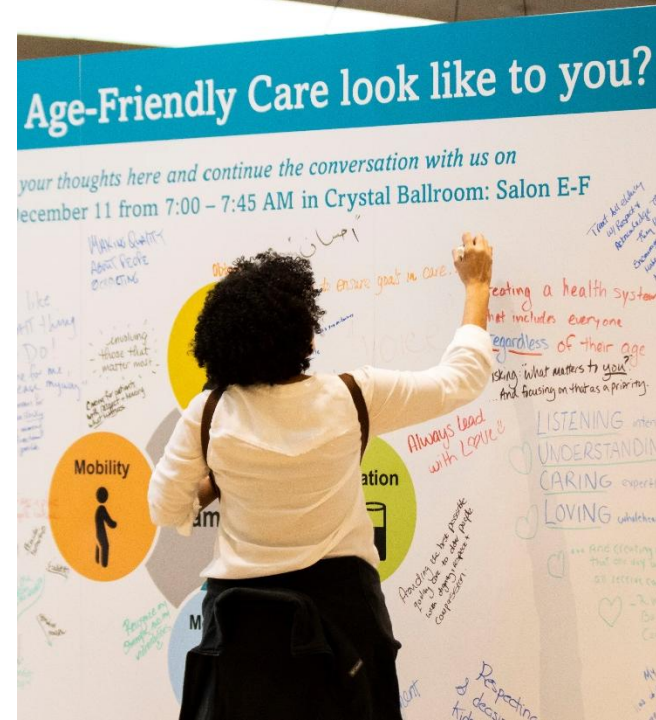
Everyone has
the best care and
health possible



Since 1991

In large systems and small villages, we have taken improvement methods originally used in the manufacturing industry and applied them to improving all aspects of health and health care.

We build improvement capability by providing people with methods and tools to make care better.

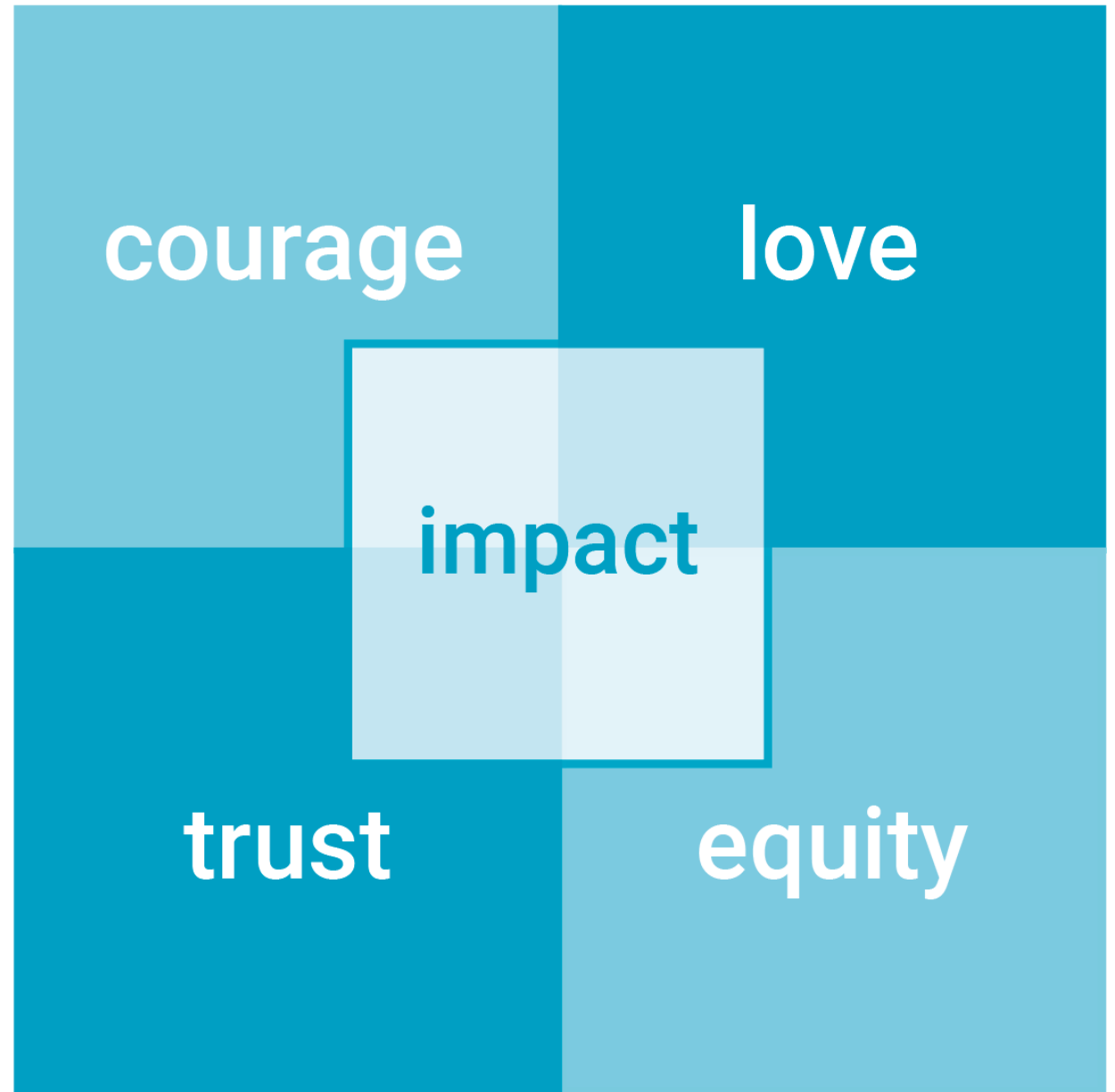


What IHI Believes

That health and health care can and **must be better**.

There can be no quality without **equity**.

Improvement science and methods drive **results**.



Let's Hear from You

- What are you hoping to get out of this program?
- What would make a course like this most valuable to you?



Reflections from past Program Participants

“The faculty were all fantastic. They have so much wisdom, knowledge, and experience and I really appreciated how honest they were in sharing their journeys so we could learn from them” – **Christina Davidson, MD, System Chief Health Equity Officer, Texas Children’s Hospital**

“The most significant take-away for me was in the vulnerability and courage that were both evident and necessary in the journeys of senior leadership. I walked away feeling firmer in my commitment to advocate within and beyond my organization.” - **Katelyn Ferreira, Health Equity Program Manager, Southcoast Health**

“The biggest benefit to me was to have a way to evaluate the current state and then have structure in implementing this work into my health system” – **Edgardo Ordonez, MD, Director of Health Equity and Community Engagement, Baylor College of Medicine Department of Emergency Medicine**



Program Overview

Why Now? Why IHI?

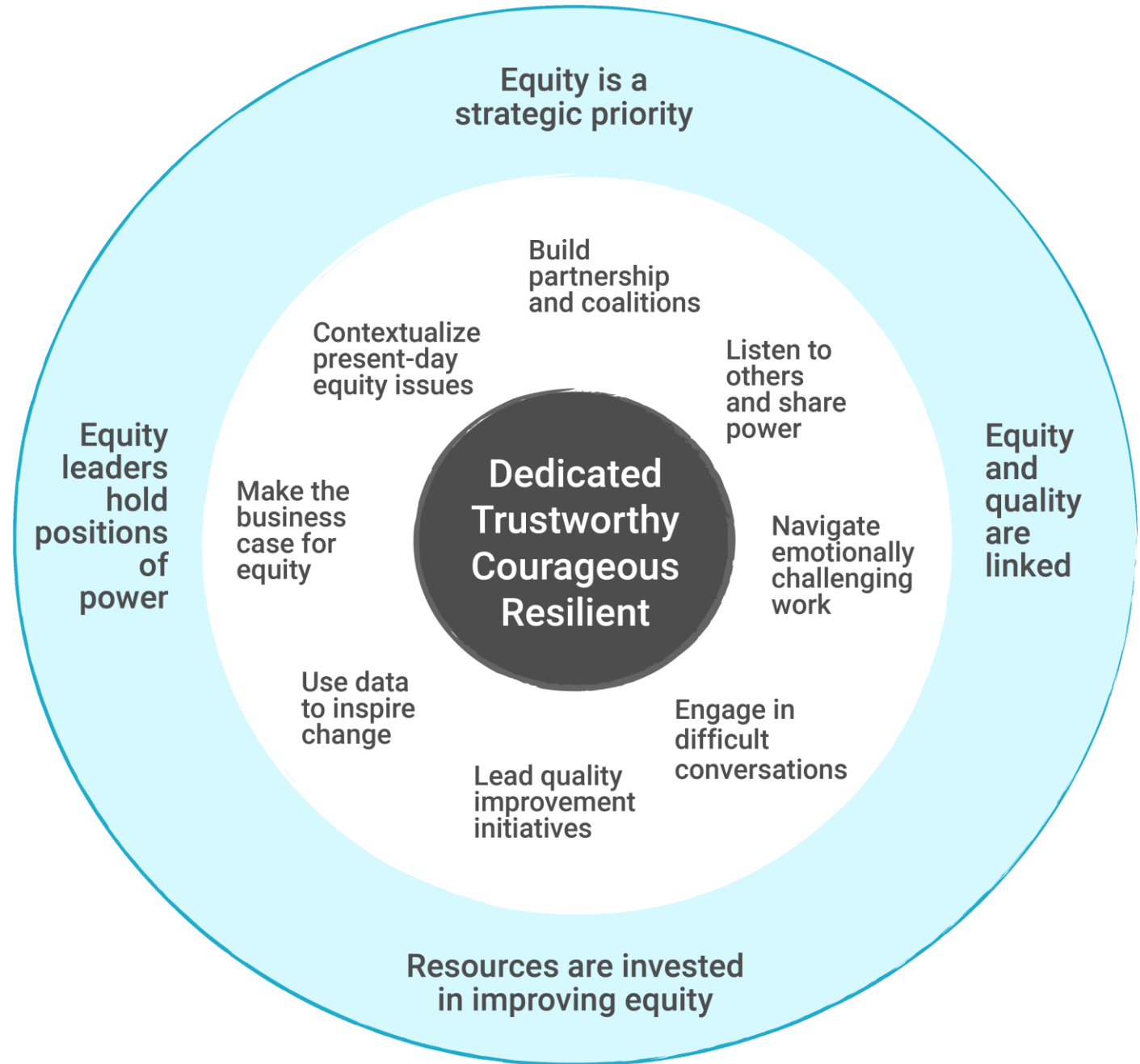
- How did we develop this framework?
- Why is this content important for leaders?



IHI's Health Equity Leadership Framework

Three Tiers:

- **Core Ways of Being** at the center
- **Skills to Cultivate** in the middle
- **Conditions for Success** on the outside





Leadership for Health Equity

Grounded in the IHI Framework for Health Equity Leadership, this dynamic virtual course helps you develop the competencies, conditions, and strategies needed to advance system-wide improvement.

Through live weekly sessions, guided assignments, and expert faculty insights, you'll gain practical tools and actionable steps to take your equity leadership to the next level.

**Scan to register
now:**



Program Objectives

After attending this program, attendees will be able to:

- Develop strategies to be an effective leader in your work to create and sustain system-wide improvement in health equity
- Examine your organization's opportunities for improvement and advocate for the conditions that will set you up for success including resources, structures, and leadership support
- Create an effective evaluation strategy to monitor progress toward reducing inequities in your service area
- Develop leadership plans committed to equity and anti-racism and create a business case and communication strategy to generate buy-in for equity work



Program Design and Key Dates

- 13 sessions (2 hours each*) across 15 weeks
- ~15 minutes to 1 hour of independent learning on the education platform between sessions
- 2-4 hours/weekly applying your learning with your team

** Please note there are 5 sessions that are 2.5 hours in duration, those sessions are bolded*

Session #	Date	Day of the week	Time (ET)
1	10-Sept	Wednesday	12:00-2:30 PM ET
2	17-Sept	Wednesday	12:00-2:00 PM ET
3	24-Sept	Wednesday	12:00-2:30 PM ET
4	1-Oct	Wednesday	12:00-2:00 PM ET
5	8-Oct	Wednesday	12:00-2:30 PM ET
6	15-Oct	Wednesday	12:00-2:00 PM ET
7	22-Oct	Wednesday	12:00-2:00 PM ET
8	29-Oct	Wednesday	12:00-2:00 PM ET
9	5-Nov	Wednesday	12:00-2:00 PM ET
10	12-Nov	Wednesday	12:00-2:30 PM ET
11	19-Nov	Wednesday	12:00-2:00 PM ET
12	3-Dec	Wednesday	12:00-2:00 PM ET
13	17-Dec	Wednesday	12:00-2:30 PM ET



Core Faculty Team



**Katie Boston-Leary, PhD, MBA,
MHA, RN, NEA-BC, FADLN, FAONL,**
Senior Vice President of Equity and
Engagement at the American
Nurses Association



Taj Mustapha, MD
Chief Equity Strategy Officer
M Health Fairview



Who Should Join

This program is designed for any health care leader who has responsibility or influence on systemwide equity and equitable health outcomes. Consider registering for this program if you are a:

- Current Chief Health Equity Officer
- Executive leader who is responsible for systemwide equity and accountable for equitable health outcomes
- Newly appointed leader who is responsible and accountable for "equity" or "diversity"



Participant Expectations



Attendance



Active Participation



Asynchronous Assignments

Continuing Education



JOINTLY ACCREDITED PROVIDER™
INTERPROFESSIONAL CONTINUING EDUCATION

In support of improving patient care, the Institute for Healthcare Improvement is jointly accredited by the Accreditation Council for Continuing Medical Education (ACCME), the Accreditation Council for Pharmacy Education (ACPE), and the American Nurses Credentialing Center (ANCC), to provide continuing education for the healthcare team.

This program is ***currently awaiting approval*** to provide continuing education credits for physicians, nurses, and Certified Professional in Patient Safety (CPPS) recertification



Questions



What's Next?

Register for the Program [HERE](#)

Discounts and Scholarships

- A 15% group discount is available for groups of 3 or more
- To apply for a needs-based scholarship, please complete the [online Scholarship Application](#) by **August 13, 2025**.

Have additional questions?

Reach out to Catherine (cwarchal@ihi.org) with any questions!



thank
you