

# Making AI Work for You: Informational Call

Lauren Cameron, Event Manager, IHI  
Jeffrey Rakover, Director, Innovation, IHI  
Daila Boufford, Senior Director, Education Strategy, IHI  
Dr. Alex Dummett, MD, FACP, ABPM-CI, CPPS Consultant, Healthcare AI Consulting LLC  
Dr. Gary Kantor, MBBS, Clinical Assistant Professor of Anesthesiology & Perioperative Medicine, Case Western Reserve University  
Dr. Hatim Abdulhussein, MBBS, MRCP, FHEA, Chief Executive Officer, Health Innovation Kent Surrey Sussex  
Dr. Jason Jones, PhD, Head of Data Science, Atropos Health  
Dr. Vlad Manuel, MD, MS, Senior Quality Officer, UCLA Health

August 18, 2025

# Faculty and Staff

---



**Dr. Alex Dummett, MD, FACP,  
CPPS, CI-ABPM, IM-ABIM,  
Adv. Cert-ABAIM**



**Vladimir Manuel, MD,  
MS**



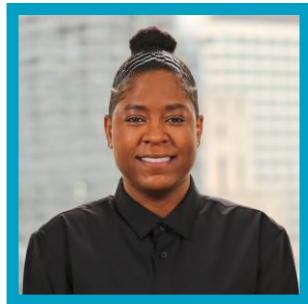
**Professor Hatim  
Abdulhussein,  
BSc, MBBS, MSc,  
PGDip, MRCGP,  
FHEA, FBCS**



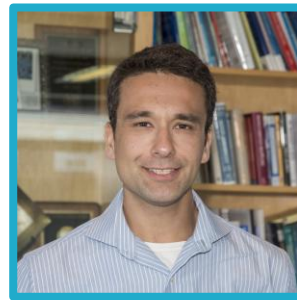
**Dr. Gareth S. Kantor,  
MB ChB (UCT),  
FRCP(Canada),  
Diplome,  
American Board of  
Anesthesiology**



**Jason Jones, PhD**



**Lauren Cameron,  
Program Manager, IHI**



**Jeffrey Rakover,  
Director, Innovation, IHI**



**Daila Boufford,  
Sr. Director, Edu Strategy, IHI**



# Agenda

---

**Here's how we will  
spend our time  
together.**



**IHI Overview**

**Program at a Glance**

**What to Expect**

**Questions?**

*Chat: In the chat, please share where you are calling from, and why you are interested in this course.*



# Making AI work for you: Overview

# You will learn how to:



## Program Objective

Enable healthcare team leaders to ***confidently evaluate and integrate AI tools*** into team workflows.

### Identify the right tool for the task

Explain the different types of AI technologies and their use in quality/safety work in health care

### Apply generative AI to Quality Improvement work

Apply generative AI tools for a range of QI use cases, such as data visualization (e.g., run charts and pareto analyses), change idea generation, and addressing implementation hurdles

### Mitigate Risks

Describe the risks of various AI uses and readily link them to potential mitigation strategies

### Integrate the Model for Improvement into AI use

Apply ideas from the Model for Improvement and from implementation science research to introduce AI tools into a health care organization safely and responsibly



# Program Agenda

Session	Date	Session Topic	Live or Self-Paced
Module 1	October 7-14, 2025	AI Fundamentals: Busting Myths, Understanding the Potential	Self-paced
Module 2	October 14, 2025 11 AM – 12:30 PM ET	AI and Health Care: Key Concepts, Trends, and Approaches	Live Virtual Session
Module 3	October 21, 2025 11 AM – 12:30 PM ET	AI for QI and Safety: How can we use AI tools to make our own work easier?	Live Virtual Session
Module 4	October 28-Nov. 4, 2025	AI and Quality/Safety – Practicing Applications	Self-paced
Module 5	November 4, 2025, 11 AM – 12:30 PM ET	AI and implementation: How can the quality and safety movement support responsible AI?	Live Virtual Session
Module 6	November 11, 2025 11 AM – 12:30 PM ET	AI and Quality Management Systems: Emerging Opportunities and Solutions	Live Virtual Session
Module 7	November 18, 2025 11 AM – 12:30 PM ET	Case Exercise and Discussion of Future Implications	Live Virtual Session
Module 8	December 2, 2025 11 AM – 12:30 PM ET	Panel discussion	Live Virtual Session

# Use AI in Your Everyday Work

---



## Understand AI Impact

How does AI impact quality & safety work, including on administrative burden



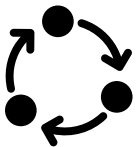
## Apply Gen AI Tools

Use AI for driver diagrams, run charts, PDSA plans, and more



## Assess AI Solutions

Are they safe, effective, and high value for our setting?



## Implement Responsibly

Apply improvement methods to integration into your workflows



## Manage Risks

Understand common AI risks (e.g., inaccuracy, bias), learn mitigation approaches



## Support Governance

Help committees set vision, align stakeholders, keep safety central



# Zooming in: AI for QI and Safety Methods

---

## **Data and analysis**

Data abstraction (e.g., clinical audits, registry abstraction)

Data analysis and visualisation (SPC charts, Pareto, trend monitoring)

Adverse event detection, reporting and analysis

## **Quality improvement and learning**

Supporting QI programme oversight and project management

Identifying and testing change ideas (e.g., reducing medication errors)

Answering QI questions (“What chart should I use?”)

Creating and supporting learning systems

## **Staff and leadership development**

Staff training and coaching

Leadership development

Creating QI teaching and training materials

## **Regulatory and compliance**

Regulatory analysis and compliance (preparing for accreditation/Joint Commission visits)

## **Communication and policy**

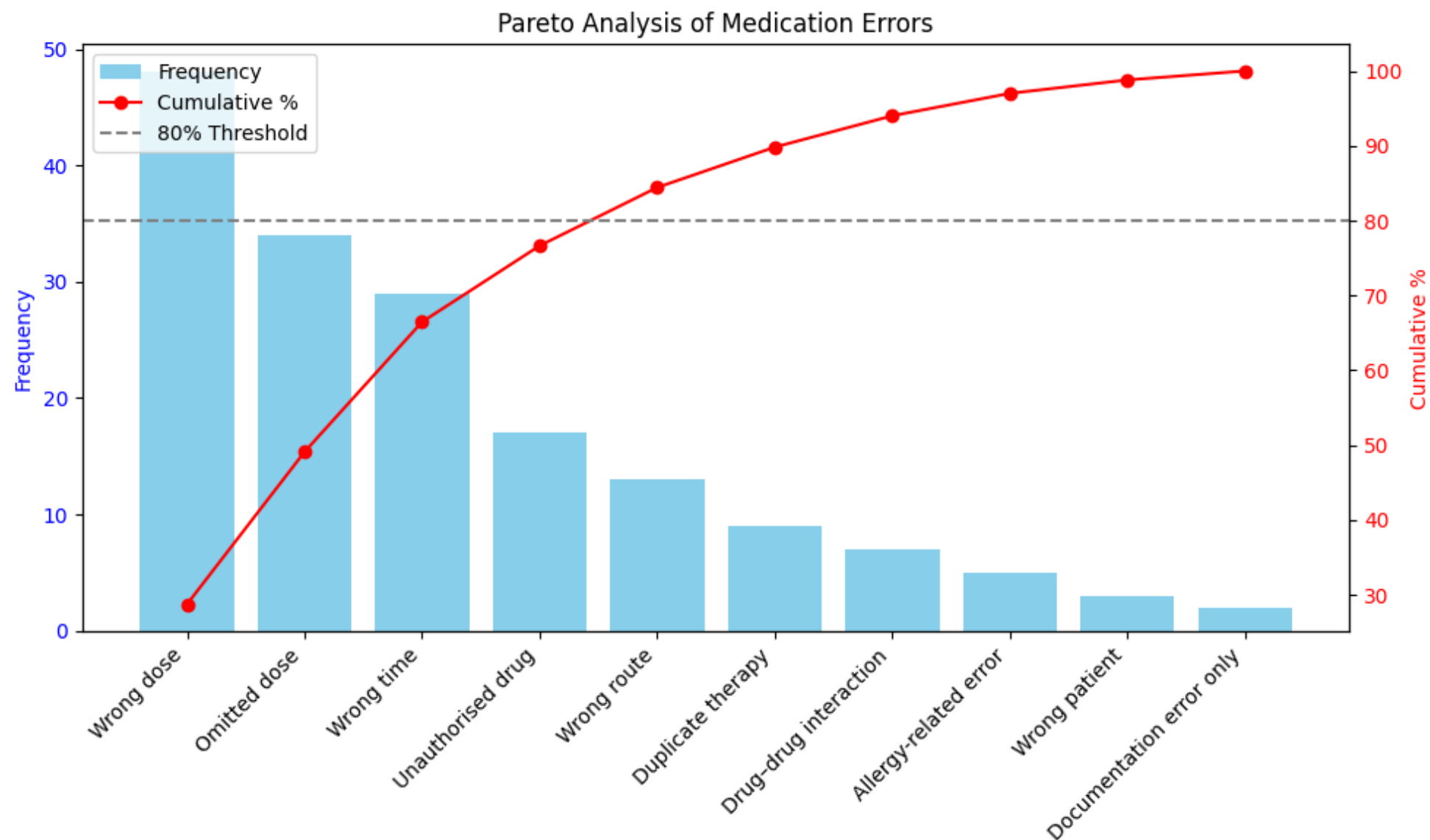
Facilitating communication between clinicians, managers and teams

Supporting policy development





## Running python code from MS-Copilot



# Zooming In: Implementation Approaches for AI

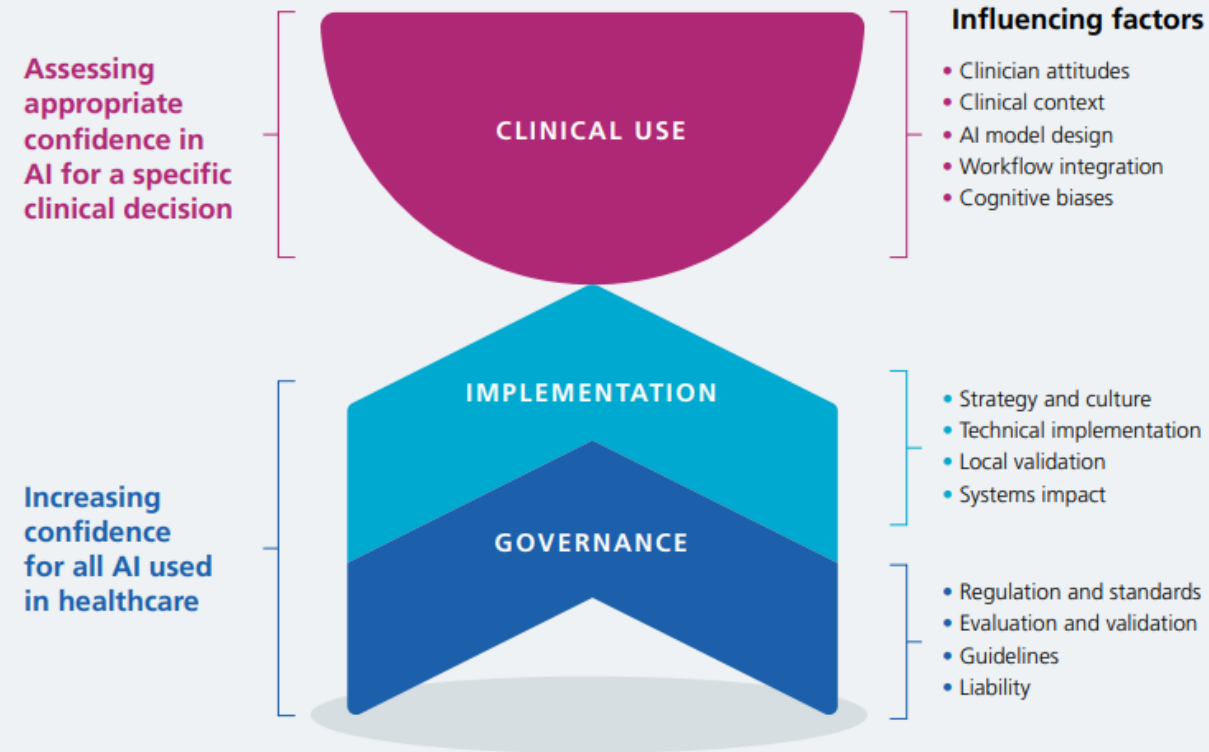
---

In this session you can expect an overview of

- Frameworks to consider in understanding and building confidence in the use of AI in healthcare and its implementation
- Learning from use cases of AI implementation in the UK's National Health Service and beyond
- Exploration of Implementation Science Tools and Methodologies in the deployment of AI
- The importance of co design and development approaches to AI adoption and scale



**Figure A:** Framework for understanding confidence in AI among the healthcare workforce



# Expectations

---



Attendance



Active Participation



Asynchronous Assignments

# Questions?



# What's Next?

## Register

[Making AI Work for You | Institute for Healthcare Improvement](#)

## Group 3+ Discounts and Scholarships Available

Group 3+ Registration link: [here](#)

Scholarship application link: [here](#)

## Have additional questions?

Please email [lcameron@ihi.org](mailto:lcameron@ihi.org) with any questions related to the course.

## Want to learn about other Fall programs?

Please visit <https://www.ihi.org/learn/courses>



**THANK  
YOU**